



## 8 Jakes Road Keysborough VIC

4 2 4

Situated in the prestigious Peppertree Estate among newly built homes and tranquil parklands, this contemporary designed home ticks all boxes of quality and modern look. Perfectly location with all amenities just a short distance away-shopping, schools, this includes the famous Haileybury Private School, Lighthouse and Sirius Colleges, Keysborough Gardens Primary School and Childcare centres, Parkmore Shopping Centre, Keysborough Office Works, Burnings, Keysborough Golf Club and Community Park making life here both convenient and fulfilling. Easy access to major highways and Eastlink and a short drive to the beach.

**Type** : House  
**Price** : \$930,000 - \$1,000,000  
**Land Size** : 363 sqm  
**View** : <https://www.leytonre.com.au/8174540>

Step inside to a welcoming hallway leading to four spacious bedrooms, including a master suite with a full en-suite and



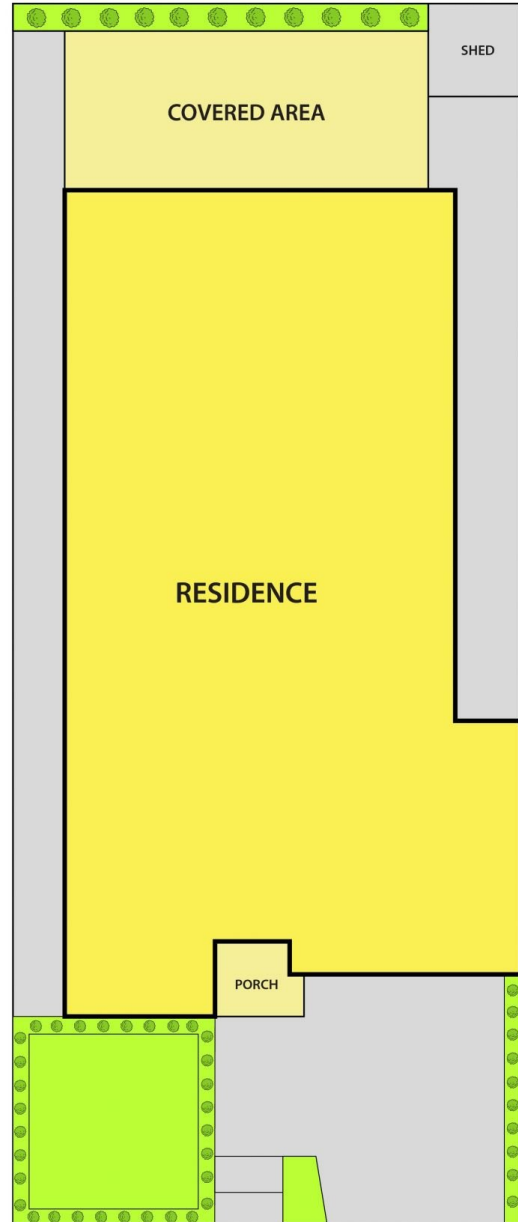
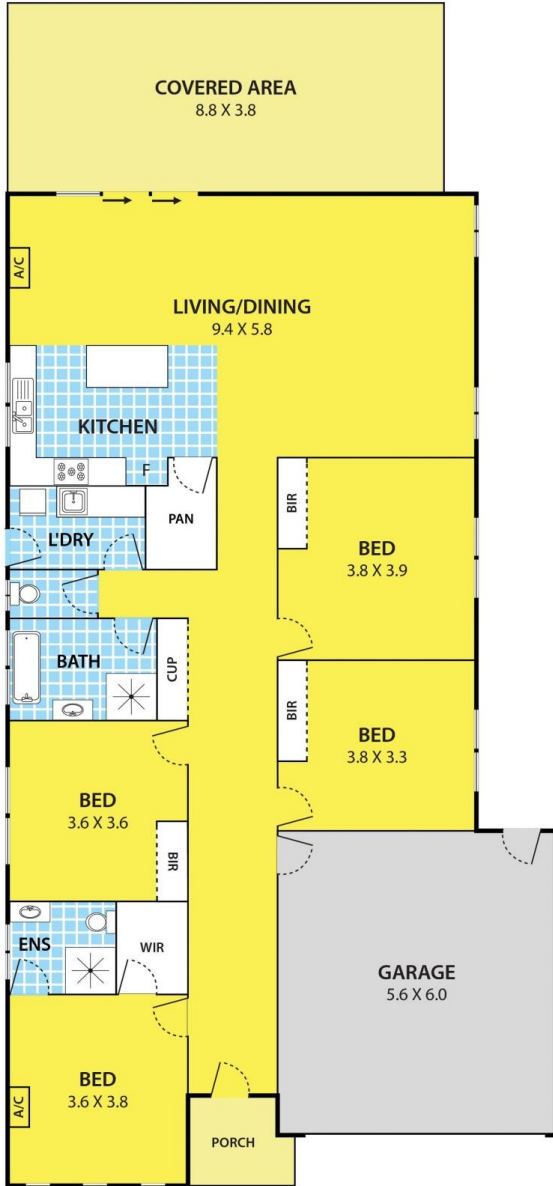
**Thu Le**  
03 9547 0345



**Kosal Prum**  
0423 610 870

[For full version visit the website](https://www.leytonre.com.au)

# 8 Jakes Road, KEYSBOROUGH



**DISCLAIMER:**

Please note plans are indicative only and not drawn to exact scale.  
All dimensions are approximate