



## 46 Bloomfield Road Noble Park VIC

3 1 1

Looking to renovate and invest, or knockdown and build your dream home (STCA - Subject To Council Approval). This is the ideal property for you!

Located within walking distance to bus stops, and just minutes from Frederick Wachter Reserve, Parkmore Shopping Centre, Yarraman and Noble Park train stations, excellent amenities and medical services, Keysborough College and Wallarano Primary and Eastlink access, the location offers a convenient family lifestyle and investment appeal.

Featuring:

- Spacious lounge
- Open-plan Kitchen and meals area

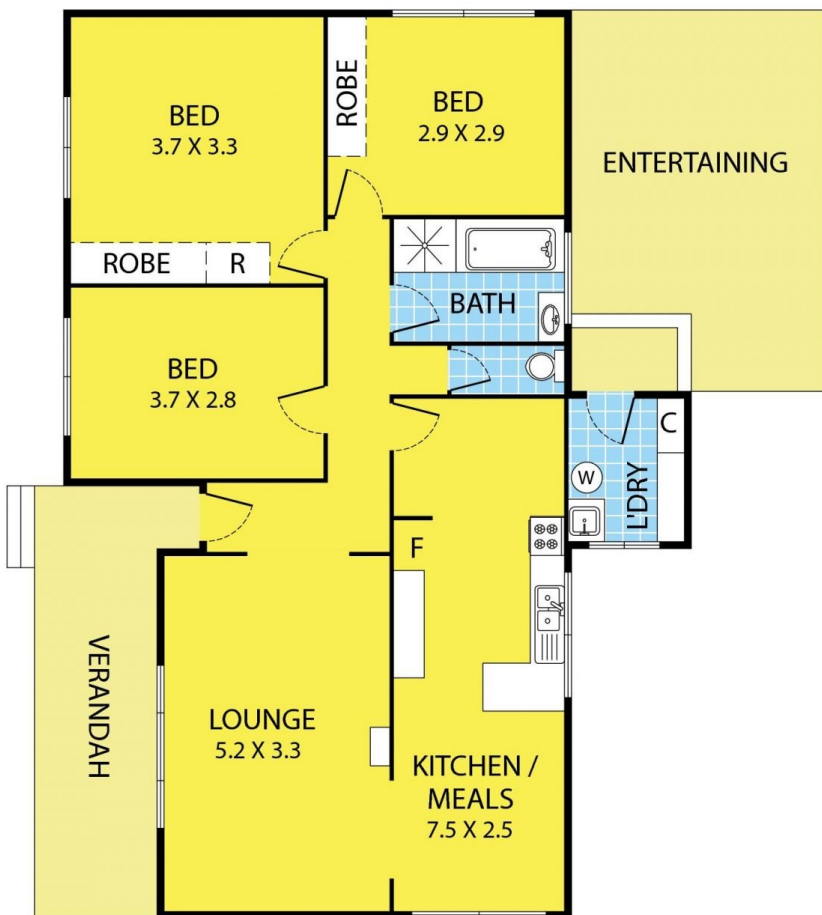
**Type** : House  
**Price** : \$760,000  
**Land Size** : 559 sqm  
**View** : <https://www.leytonre.com.au/8089867>



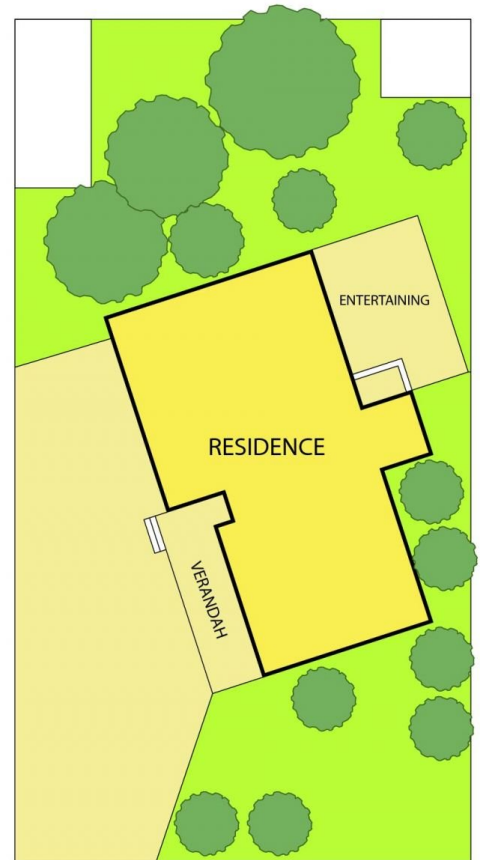
**Kosal Prum**  
0423 610 870

[For full version visit the website](https://www.leytonre.com.au)

# 46 Bloomfield Road, NOBLE PARK



FLOOR PLAN



SITE PLAN



DISCLAIMER:  
Please note plans are indicative only and drawn to exact scale.  
All dimensions are approximate